

# 07 Gold Wing

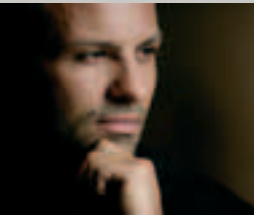
**HONDA**  
The Power of Dreams





# Magnificent voyager

The ultimate luxury riding experience awaits you. A magnificent high performance two-wheeled marvel, which takes motorcycling to unparalleled levels of comfort, convenience and cruising power. It's truly legendary, offering the power to excite and the comfort to explore, with features and equipment not available on any other motorcycle on the road today.



# Advanced technology

Tour. Explore. Experience and dream with the most outstanding of motorcycles. Time and time again, the Gold Wing raises the bar. So it should be no surprise that the Gold Wing features a satellite navigation system - another first on European roads. But there's so much more, from an integrated audio system and individual ventilation to cruise control. Superbly equipped the Gold Wing has everything you'd expect and can be everything you want.



# Unique protection

The new Gold Wing revolutionises motorcycle safety by introducing a brand new concept: the first ever airbag fitted on a mass produced motorcycle. Combined with responsive DCABS and other safety features, you can now take to the road riding not only the world's premier luxury touring motorcycle but also the most technologically advanced and one of the safest on the road today.



# Luxurious comfort

As the ultimate touring bike, the Gold Wing has a lot on offer. You'll enjoy every second of a weekend ride or a longer transcontinental adventure on a Gold Wing. Individually heated and adjustable seats with backrests upgrade your journey to first-class. And while the long travel forks and adjustable rear suspension absorb the road as it unfolds in front of the large adjustable windscreen, you wish the end of the road would never come... except to those special destinations that the Gold Wing can take you.



# Amazingly equipped



## '07 Gold Wing

**Engine** Liquid-cooled 4-stroke 12-valve SOHC flat-6

**Displacement** 1,832 cm<sup>3</sup>

**Bore x Stroke** 74 x 71 mm

**Compression Ratio** 9.8 : 1

**Max. Power Output** 87 kW/5,500 min<sup>-1</sup> (95/1/EC)

**Max. Torque** 167 Nm/4,000 min<sup>-1</sup> (95/1/EC)

**Carburation** PGM-FI electronic fuel injection with automatic choke

**Ignition System** Computer-controlled digital transistorised with electronic advance

**Starter** Electric

**Transmission** 5-speed (including overdrive, plus electric reverse)

**Final Drive** Enclosed shaft

**Dimensions (LxWxH)** 2,635 x 945 x 1,455 mm

**Wheelbase** 1,690 mm

**Seat Height** 740 mm

**Ground Clearance** 125 mm

**Fuel Tank Capacity** 25 litres (including 4-litre warning light reserve)

**Suspension Front** 45 mm air-assist telescopic fork with anti-dive, 140 mm stroke

**Suspension Rear** Pro-Link Pro-Arm with electronically-controlled spring preload adjustment, 105 mm axle travel

**Wheels Front** Hollow-section 5-spoke cast aluminium

**Wheels Rear** Hollow-section triple-spoke cast aluminium

**Tyres Front** 130/70 R18 (63H)

**Tyres Rear** 180/60 R16 (74H)

**Brakes Front** 296 x 4.5 mm dual hydraulic disc with combined 3-piston callipers, ABS, floating rotors and sintered metal pads

**Brakes Rear** 316 x 11 mm ventilated disc with Combined 3-piston calliper, ABS and sintered metal pads

**Frame** Diamond; triple-box-section aluminium twin-spar

**Caster Angle** 29° 15'

**Trail** 109 mm

**Dry Weight** 381 kg



Cabernet Red Metallic



Billet Silver Metallic



Black-Z

PGM-FI

HISS

DCABS

AIRBAG

HECS3

NAVI

EURO-3

Honda machines sold in your area are those most suited to local conditions. Specifications, appearance and availability may differ depending on markets, and are subject to change without notice. For details, please consult your nearest Honda dealer.

# HONDA

The Power of Dreams



The specific details of this brochure do not apply to any particular product supplied or offered for sale. Manufacturers reserve the right to vary specifications, including colours, with or without notice at such times in such manner as deemed appropriate. Major as well as minor changes may be involved. Every effort, however, is made to ensure the accuracy of the particulars contained in this brochure. Consult your dealer for details regarding the specifications of any featured product. This publication shall not constitute - under any circumstances whatsoever - an offer by the Company to any individual. All sales are made by the Distributor or Dealer subject to and with the benefit of the standard Conditions of Sale and Warranty provided by the Distributor or Dealer, copies of which may be obtained upon request. This publicity material conforms to the UK-only Trade Descriptions Act (1968). While efforts are made to ensure specification accuracy, brochures are prepared and printed several months in advance of distribution and consequently cannot always immediately reflect either changes in specification or in some isolated cases the provision of a particular feature. Customers are always advised to discuss specific details with the supplying Dealer, especially if a selection is dependent upon one of the features advertised.

## Honda (UK) - Motorcycles

470 London Road, Slough, Berkshire, SL3 8QY England

Honda Contact Centre - Telephone: 0845 200 8000

[www.honda.co.uk](http://www.honda.co.uk)



Printed on Recycled Paper



A division of Honda Motor Europe Ltd. No. 857969 Registered in England and Wales