



This litre-class semi-naked is all set to be the fun machine for the future combining exhilarating power with light, responsive handling. The new CBF1000 features a beautifully designed wind-cheating half-fairing and adjustable seat height to best match your build. It's styled for comfort, and with the host of specially designed Honda Genuine Accessories you can extend your riding pleasure and enjoy the benefits of accessories with exact factory specifications ensuring a precise fit, superior function and integrated design – all tailored to suit your specific needs.



Top box (35L - KTF)

08L55 KTF 8P0B Pearl Siena Red (R-320P)
08L55 KTF 8Z0B Nightstar Black (NH-A84P)
08L55 KTF 810B Quasar Silver Metallic (NH-A48M)
08L55 KTF 830G Amber Yellow (Y-200P)

Fitting Time 0.1 hrs | RRP £100.00

- 35L of carrying capacity
- can store one full-face helmet or two open-face helmets
- quick-locking and easily detachable
- top box lid produced in matching colour
- top box pad not included
- must be combined with top box bracket

08Z51 MFA 800 | Fitting Time 0.3 hrs | RRP £40.00 rear carrier

08L42 MFA 800 | Fitting Time 0.3 hrs | RRP £85.00 and top box carrier

08L42 MCW B00 | Fitting Time 0.2 hrs | RRP £20.00
TOTAL COMPLETE: RRP £245.00



Top box (45L - MCW)

08L55 KTF 8T0A Pearl Siena Red (R-320P)
08L55 KTF 8X0A Nightstar Black (NH-A84P)
08L55 KTF 880A Quasar Silver Metallic (NH-A48M)
08L55 KTF 8Y0A Amber Yellow (Y-200P)

Fitting Time 0.1 hrs | RRP £175.00

- 45L of carrying capacity
- can store two full-face helmets and more
- top box lid produced in matching colour
- features a locking quick-detach mounting system
- top box carrier, pillion backrest and top box mat included
- must be combined with top box bracket

08Z51 MFA 800 | Fitting Time 0.3 hrs | RRP £40.00 and rear carrier

08L42 MFA 800 | Fitting Time 0.3 hrs | RRP £85.00
TOTAL COMPLETE: RRP £300.00



Top box (35L) inner bag

08L56 KPR 800 | Fitting Time 0 hrs | RRP £35.00

- black Nylon bag with silver Honda Wing logo on front pocket
- expandable from 15 to 25L
- front pocket can contain an A4-size file
- comes with adjustable shoulder belt and carrying handle



Top box (45L) inner bag

08L56 MY5 800 | Fitting Time 0 hrs | RRP £35.00

- black Nylon bag with silver Honda Wing logo on front pocket
- expandable from 21 to 33L
- front pocket can contain an A4-size file
- comes with adjustable shoulder belt and carrying handle
- fits in both MY5 and MCW top box



Top box (45L) inner bag deluxe

08L56 MCW A00 | Fitting Time 0 hrs | RRP £40.00

- light grey Nylon bag with black zippers and black embroidered Honda Wing logo on front pocket
- expandable from 21 to 33L
- front pocket can contain an A4-size file
- comes with adjustable shoulder belt and carrying handle
- fits in both MY5 and MCW top box



Top box mat (45L - MY5)

08P11 MCW 800 | Fitting Time 0.1 hrs | RRP £30.00

- black polyurethane mat
- for 45L MY5 top box
- standard in 45L MCW top box



Top box mat (35L - KTF)

08P11 KTF 800 | Fitting Time 0.1 hrs | RRP £10.00

- black synthetic mat
- for 35L KTF top box



Lower top box pad

08P60 KRJ 800A | Fitting Time 0.2 hrs | RRP £20.00

- additional backrest pad on lower top box for extra comfort
- for both MY5 and MCW top box



Top box pad (KTF)

08P60 KTF 800 | Fitting Time 0.1 hrs | RRP £25.00

- additional backrest pad on top box lid
- for superior pillion comfort
- for 35L KTF top box



Top box pad (KPZ)

08P60 KPR 800 | Fitting Time 0.2 hrs | RRP £20.00

- additional backrest pad on top box lid
- for superior pillion comfort
- for 35L KPZ top box



Top box pad (MY5)

08P60 MY5 801 | Fitting Time 0.2 hrs | RRP £20.00

- additional backrest pad on top box lid
- for superior pillion comfort
- features 3D Honda logo
- for 45L MY5 top box



Rear wheel hugger

08F63 MFA 800 Incolour Silver Metallic

Fitting Time 0.2 hrs | RRP £105.00

08F63 MFA 860 Pearl Siena Red (R-320P)
08L63 MFA 870 Nightstar Black (NH-A84P)
08L63 MFA 830 Quasar Silver Metallic (NH-A48M)
08L63 MFA 880 Amber Yellow (Y-200P)

Fitting Time 0.2 hrs | RRP £135.00

- gives a more classy look to the bike
- protects the rear shock absorber from dirt



Pannier kit (29L)

08L52 MFA 800 | Fitting Time 0.5 hrs | RRP £350.00

- set of two specially designed, aerodynamic and fully integrated 29L panniers
- pannier stays included
- additional lock barrel and spare keys included



Pannier colour panel set (29L)

08F84 MER 8F0 Pearl Siena Red (R-320P)
08L84 MER 8P0 Nightstar Black (NH-A84P)
08L84 MER 880 Quasar Silver Metallic (NH-A48M)
08L84 MER 8R0 Amber Yellow (Y-200P)

Fitting Time 0.1 hrs | RRP £100.00



Pannier inner bag set deluxe

08L56 MCW 800 | Fitting Time 0 hrs | RRP £50.00

- set of two strong, light grey, Nylon-fabric pannier inner bags
- 16L of carrying capacity each, front pocket included
- handle and straps for carrying ease
- black embroidered Honda Wing logo on front pocket



Pannier kit (33L)

08L52 MFA 860 Pearl Siena Red (R-320P)
08L52 MFA 870 Nightstar Black (NH-A84P)
08L52 MFA 830 Quasar Silver Metallic (NH-A48M)
08L52 MFA 880 Amber Yellow (Y-200P)

Fitting Time 0 hrs | RRP £500.00

- set of two specially designed, aerodynamic and fully integrated 33L panniers
- produced in matching colours
- each pannier can contain one full-face helmet
- pannier stays included
- additional lock barrel and spare keys included



Top bridge cover and meter panel

08P54 MFA 800 top bridge cover

Fitting Time 0.2 hrs | RRP £30.00

08F86 MFA 800 meter panel

Fitting Time 0.2 hrs | RRP £30.00

- tailor-made carbon-print 3D-shape top bridge cover and meter panel
- carbon pattern matches tank pad and fuel lid cover
- for a more focused look of sharp, aggressive performance



Knuckle deflector set

08P72 MFA 800 | Fitting Time 0.5 hrs | RRP £50.00

- set of two black polymer knuckle deflectors
- attach to the front upper cowl to further improve wind protection



Rear seat cowl

08F74 MFA 860 Pearl Siena Red (R-320P)

08F74 MFA 870 Nightstar Black (NH-A84P)

08F74 MFA 830 Quasar Silver Metallic (NH-A48M)

08F74 MFA 880 Amber Yellow (Y-200P)

Fitting Time 0.2 hrs | RRP £100.00

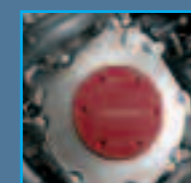
- installs on top of pillion seat
- gives a more focused look of sharp, aggressive performance
- easy access to carrying space underneath



Mainstand

08M50 MFA 800 | Fitting Time 0.7 hrs | RRP £110.00

- for more secure parking on variable ground surfaces
- facilitates cleaning and rear wheel maintenance



Crankcase ornament set

08F84 MFA 860A Pearl Siena Red (R-320P)

08F84 MFA 870A Nightstar Black (NH-A84P)

08F84 MFA 830A Quasar Silver Metallic (NH-A48M)

08F84 MFA 880A Amber Yellow (Y-200P)

Fitting Time 0.2 hrs | RRP £45.00

- colour-matched covers placed on the crankcase
- gives a personal touch to the bike



For your peace of mind Honda Genuine Accessories are carefully designed, researched and stringently tested to the highest standards. And since they're all Honda approved you'll know that they're just as tough and well made as your Honda motorcycle.

Please Note - All prices quoted are correct at time of printing and are subject to change without prior notice.



Honda Averta Alarm System page 12-13



Honda Heated Grip Kit page 10-11



Honda Generic Accessories page 4-17